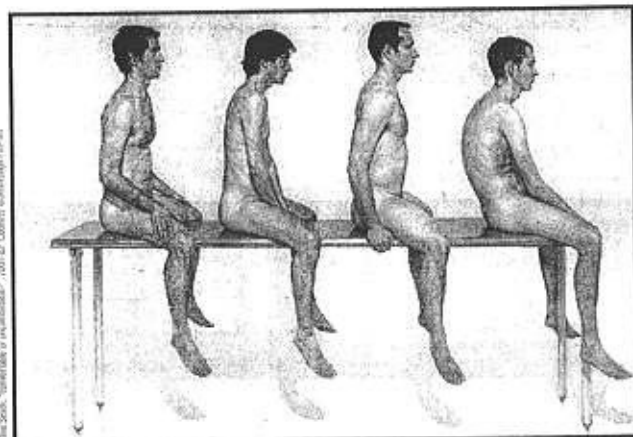


## THE WIDER COMMERCIAL SCENE



Clive Smith, "Comfortable or uncomfortable?", 2001-02. Courtesy Marlborough Fine Art

### Clive Smith Marlborough Fine Art

The stark environment and white empty spaces in Clive Smith work (4 April-4 May) are a dramatic departure, the result of a move to new spacious studios in Williamsburg, Brooklyn. Smith says of his new approach, "It allows me to strip away the surface and get to the core of what really matters within a painting." He embarks on the male nude for the first time, positioning the figures on a steel table in a way that makes them feel vulnerable rather than sexual (above, "comfortable or uncomfortable?", 2001-02). The work is riddled with emotional and physical tension and the scene is set up like a performance for the viewer. Not all the paintings depict the human figure, but even the still-lives have the same portentous feeling. "Together on your own", substitutes bodies for pillows, inspired by a photograph of a Bosnian massacre where the murdered bodies were laid out in lines on the floor.