

## ARTWEEK

&gt;&gt; COURANT.COM/MUSEUMS

## 'CLASH BY NIGHT': SHADOWS BECOME ART



ROGER CATLIN

rcatlin@courant.com

are the materials and which are the shadows.

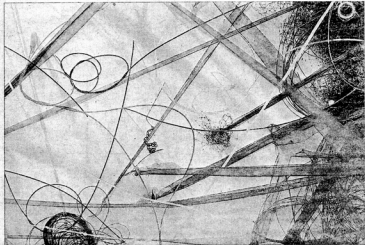
Penn carted in boxes of material Sunday and began work on the installation. She said the work changes once she gets into the space and begins working with the material. Monofilament may sound like an artistic term, but it's nothing more than fishing line of various grades. It often retains the circles of its spools as it's unfurled to catch not fish but viewers' eyes.

Penn's medium "expands the notion of drawing" into dimensions. When she decided to "get rid of the armature altogether," she moved from frames and the edges of paper into wall-length works where space is open. And she loves the 40-foot Real Art Ways wall.

"It's such a luxury to use so much uninterrupted wall space," she said.

The opening of Penn's "Clash by Night" tonight coincides with the monthly Creative Cocktail Hour at Real Art Ways, 56 Arbor St., from 6 to 8.

The exhibit continues through Oct. 11. Penn gives an artist's talk there Sept. 24 at 6 p.m.



GELAH PENN

"CLASH BY NIGHT" opens today at Real Art Ways.

**I**t begins with a drawing.

But the abstract journey of lines created by New York artist Gelah Penn on paper are soon translated into loops and extended lines of monofilament that currently traverse big white walls.

One such wall is the Real Art Ways' real gallery, where her installation, "Clash by Night," opens today.

The swirls and loops of line spiraling out from the wall in three dimensions converge into a cocoon of netting and accents of plastic tubing and mesh in the gallery's corner.

The shadows become their own lines of art. It's difficult at first to see which of the swoops