



Cor + Som  
(Color + Sound)

Pat Badt + Scott Sherk







Cor + Som  
(Color + Sound)

Pat Badt + Scott Sherk

Evoramonte Castle, Portugal

August 12 - September 11, 2016

## **Cor + Som (Color + Sound)**

In the late summer of 2015, Pat Badt and Scott Sherk shared studios at Foundation Obras set within the Alentejo countryside between Evoramonte and Estremoz. During this period they collected notes and studies concerning sound and color. Scott Sherk made audio field recordings of the surrounding area including Evoramonte Castle, sheep pastures, windy fields, Saturday markets, and the rhythms of the day. Pat Badt noticed the colors and light of the landscape, the towns, the quarries, and the fields throughout the days. Together their impressions build to create the experiences of the tones and ambiances of place—which has become **Cor + Som**.

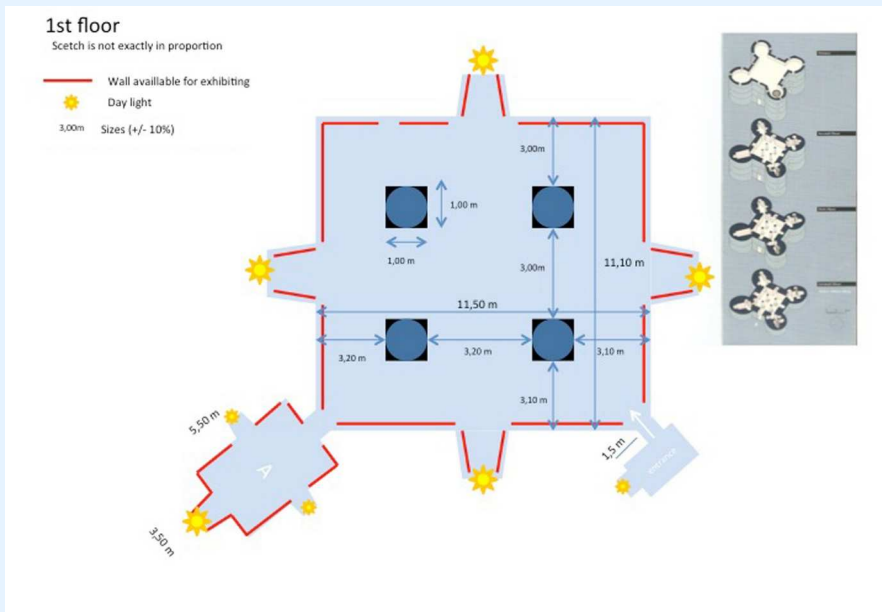
**Cor + Som** occupies two rooms on the 1st floor of Evoramonte Castle. The main chamber of the 1st floor presents sound compositions created from the field recordings of the Alentejo in quadraphonic surround sound, and a composition of light and color filtering through the windows of the castle. The sound works use source material from grazing sheep, summer crickets, quiet hidden meadows, and the resonant sounds recorded in the Castle of Evoramonte, itself. The recorded sounds are sculpted and modeled in three-dimensional ways to create an environment of sound in space. Scott Sherk believes that sound is an important determinant in our perception of space and envisions these sound works to be aural sculptures—sounds creating spaces. In creating these sound sculptures he often carves from the sound the natural harmonics of a place.

Pat Badt extracted color from her daily notations from last summer in Alentejo to concentrate on the contrasting colors of the big sky and the rich earth. The castle sits atop a rock embankment, and it is the closest thing to the sky. Focusing on this aspect of the castle, rather than its military history, Badt wanted to bring the sky and the celestial into the large chamber. Bringing a subtle clarity to the atmosphere of the room, the color participates in tandem with the sound and reveals the impressive interior space. The cool blues merge with the surround sound to create an experience of otherworldliness and transcendence.

In the small antechamber, the brilliant heat of the Alentejo sun is emphasized along with the original, unaltered field recordings of the surrounding area. The field recordings take us from the Estremoz market place through the sun-baked meadows and cork forests, and into the dark and vibrant Alentejo night. We hear a knife grinder, a poultry market, insects, the morning chorus of birds, and the omnipresent wind that unites and blows through everything. The red glow of the room reinforces the grounded aspect of these field recordings and operates in stark contrast with the purity of the large outer room.

Throughout the installation, Badt acknowledges the panoramic views from the castle keep. Visitors view the surrounding landscape through a horizon-zone created by the framed views of the untreated windows.

Both Badt and Sherk are interested in the small, everyday textures of life—the reflection of light off a roof, the sound of the crickets by the window, the rush and movement of the wind through the grass. **Cor + Som** is an attempt to make art from these everyday elements.



Plan 1st floor Evoramonte Castle (above), Evoramonte Castle (right)







Composite image of Main Chamber and Antechamber



Main Chamber, looking to Antechamber



Main Chamber showing treated window and speaker





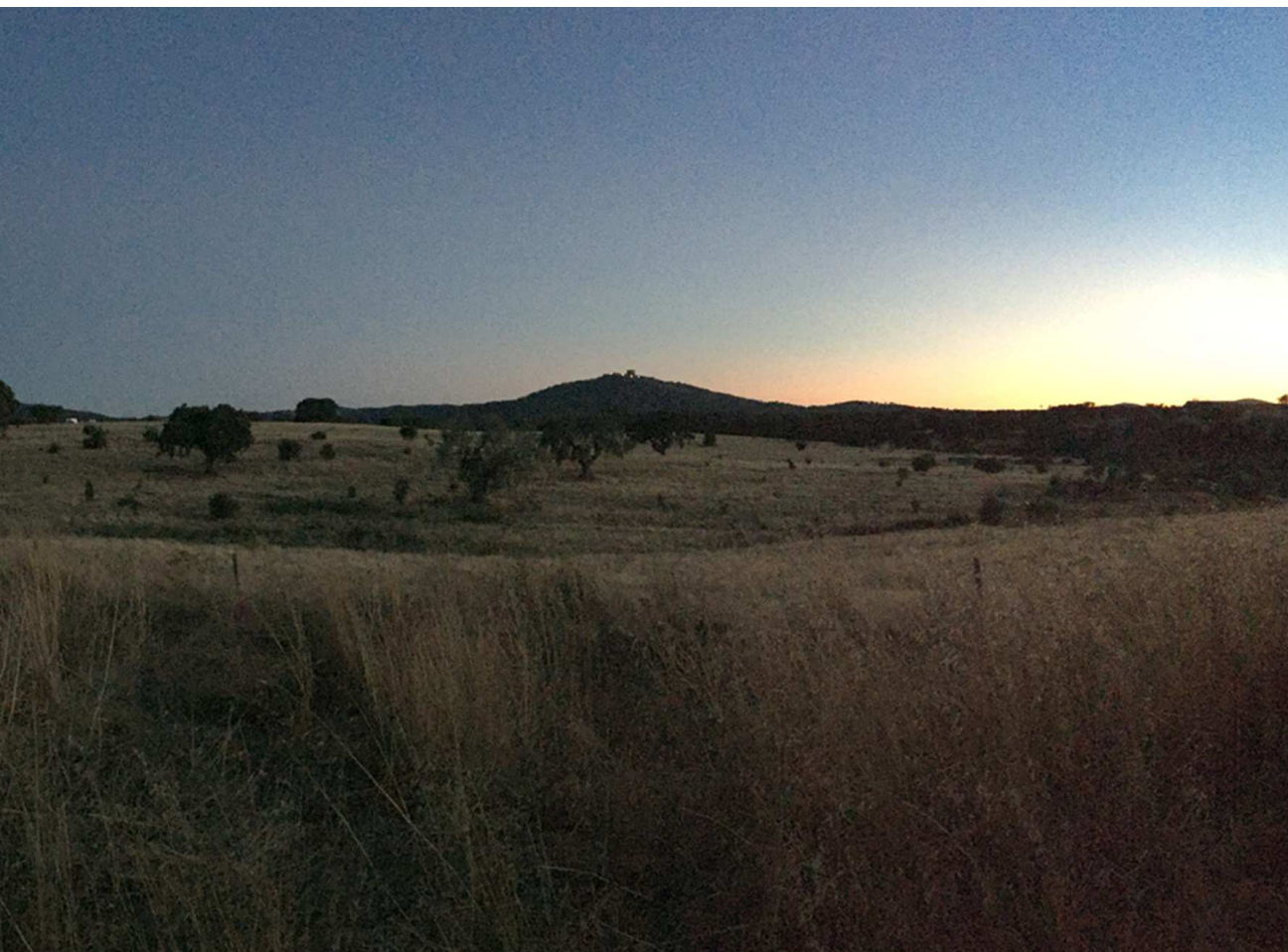
Panorama Main Chamber, treated windows and speakers

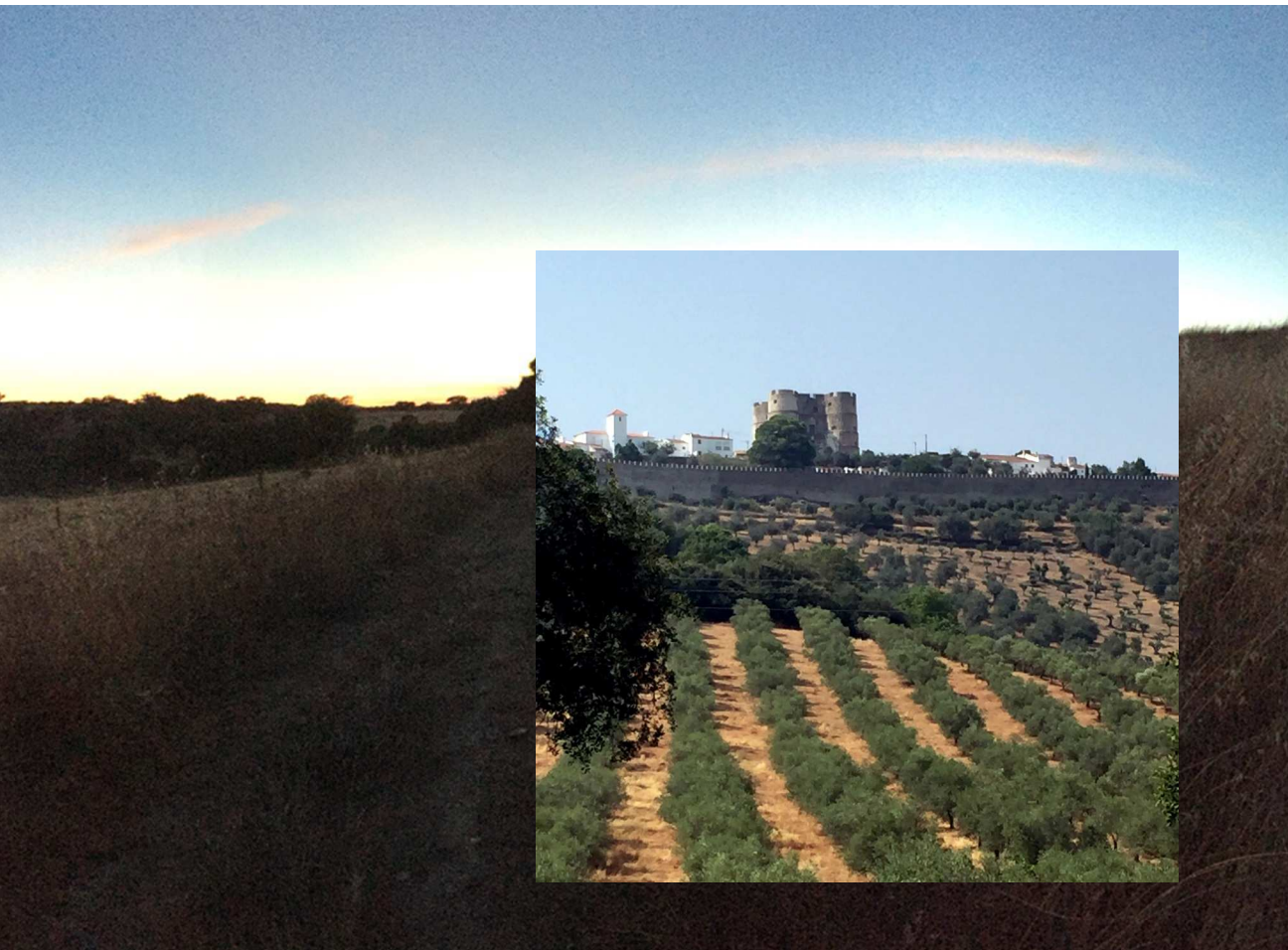


Antechamber, treated window center niche



Antechamber, looking out to main chamber stereo speakers





Panorama Evoramonte Castle, insert closer view of the Castle

**Scott Sherk** and **Pat Badt** have collaborated on many site-specific projects often as The Third Barn. The Katonah Museum of Art, The Lab Gallery in New York City, and the Allentown Museum of Art are among the places where they have exhibited together. They have a sound and color piece in the permanent collection of the American Embassy in Riga, Latvia. Individually they both have studio practices. Scott Sherk is an Artist in Residence at Muhlenberg College. Pat Badt is Professor Emeritus at Cedar Crest College.

[www.thethirdbarn.org](http://www.thethirdbarn.org)



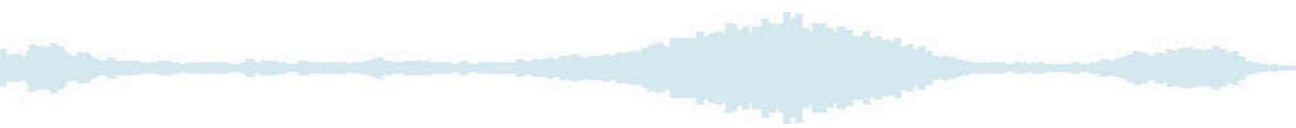
mounted speaker

**Pat Badt**

Pat Badt is a painter. Her work is inspired by location, filtered through experience and sensibility. She lives in an old farmhouse along a creek, surrounded by apple orchards, low mountains and the convergence of two creeks. Her paintings have been exhibited in Brussels, New York, Philadelphia, Los Angeles and places between and are included in the private and public collections including the Ruth Hughes Collection of Artist Books at Oberlin College and Bryn Mawr College. Pat Badt is an Artist in Residence and Professor Emeritus at Cedar Crest College. She has been the recipient of many awards and prizes including an NEA for painting.

**Scott Sherk**

Scott Sherk is a sculptor who often works with sound. He has exhibited widely including exhibitions at the Katonah Museum of Art, the Allentown Art Museum, the Kim Foster Gallery NYC, and the Leslie Cecil Gallery NYC. His exhibitions have been favorably reviewed by the *New York Times* and *ArtForum*. His sound work has been released on CD by 3Leaves, and/OAR, and net releases by Stasisfield and Wandering Ear. Scott Sherk is a Professor/Artist in Residence at Muhlenberg College where he has been a recipient of the Class of '32 Research Chair and twice the Hoffman Research Fellowship.



Special thanks to Carolien van der Laan and Ludger van der Eerden of the OBRAS Foundation and to Dr. Anna Christina Pais, Art Historian at the Direcção Regional de Cultura do Alentejo, Portugal for all their support in making this project possible.



[www.thethirdbarn.org](http://www.thethirdbarn.org)  
@2016



