

Pat Badt

## Marking the Land/scape





Pat Badt

Marking the Land/scape

November 3 - December 7, 2008

**Bertha V.B. Lederer Gallery**  
**SUNY Geneseo**

Published on the occasion of the exhibition

**Marking the Land/scape**

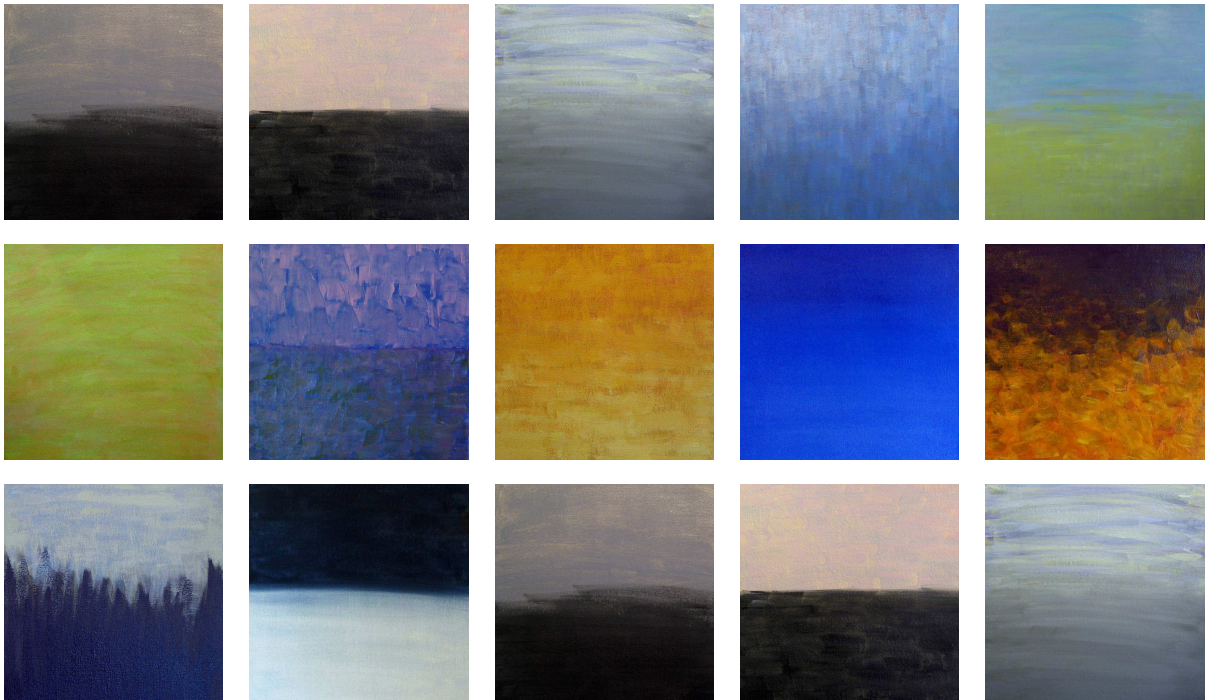
November 3 to December 7, 2008

*Bertha V.B. Lederer Gallery*

Cynthia Hawkins, Gallery Director

STATE UNIVERSITY OF NEW YORK AT GENESEO

copyright @ 2008 [www.thethirdbarn.org](http://www.thethirdbarn.org)  
All rights reserved.



*Badt is a landscape painter who takes a very close look at her environment and minimizes the overall schema relying on controlled gestural brush marks that may be construed as Cezannesque. Badt uses color to reveal nature and light.*

Cynthia Hawkins, Gallery Director  
SUNY Geneseo

**Marking the Land/scape** is an exhibition of *AnnualHours*, 12 painted panels. Each panel represents the day and evening light of a calendar month. The daylight and evening light of each month relates to the numerical order of that month. January is the first month and describes the first hour am and pm. April, the fourth month, represents 4 am and 4 pm, and so on. When not exhibited the series of paintings are housed in a clamshell box.

*January 1am/1pm, AnnualHours*, oil on canvas on alumalite, 16" x 12"



*February 2am/2pm, AnnualHours*, oil on canvas on alumalite, 16" x 12"







*March 3am/3pm, AnnualHours*, oil on canvas on alumalite, 16" x 12"





*April 4am/4pm, AnnualHours*, oil on canvas on alumalite, 16" x 12"

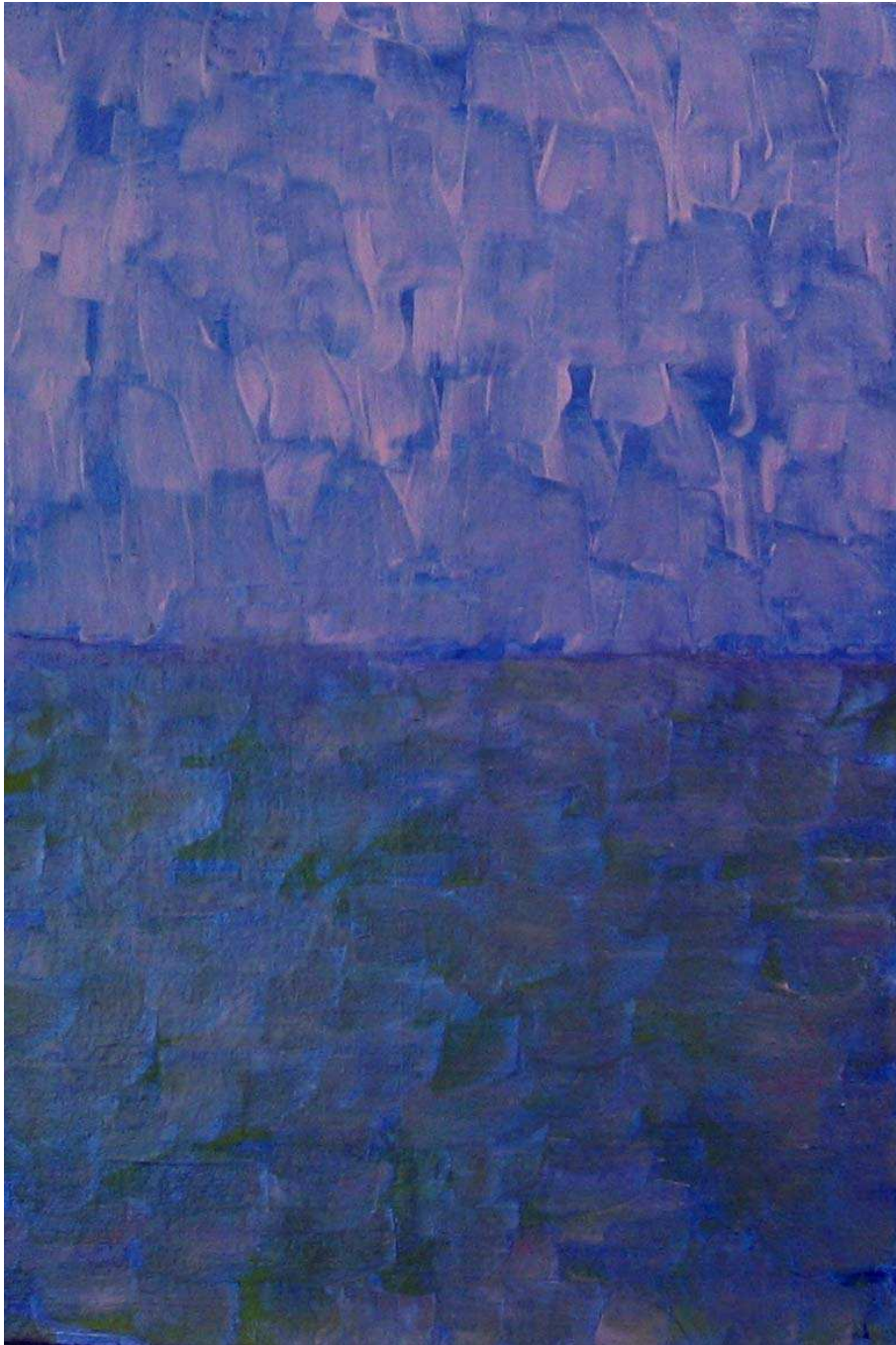


*May 5am/5pm, AnnualHours*, oil on canvas on alumalite, 16" x 12"





*June 6am/6pm, AnnualHours*, oil on canvas on alumalite, 16" x 12"



*July 7am/7pm, AnnualHours*, oil on canvas on alumalite, 16" x 12"





*August 8am/8pm, AnnualHours, oil on canvas on alumalite, 16" x 12"*



*September 9am/9pm, AnnualHours, oil on canvas on alumalite, 16" x 12"*





*October 10am/10pm, AnnualHours*, oil on canvas on alumalite, 16" x 12"



*November 11am/11pm, AnnualHours, oil on canvas on alumalite, 16" x 12"*





*December 12am/12pm, AnnualHours*, oil on canvas on aluminite, 16" x 12"

## Pat Badt

### Selected One-person Exhibitions

|  |      |
|--|------|
| Paty Eiffe Gallery, Moravian College, Bethlehem, PA                                | 2007 |
| Swain Alumni Gallery, Allentown, PA  | 2005 |
| Tompkins Gallery, Cedar Crest College, <i>Pat Badt: Wood, Water &amp; Thursday</i> | 2003 |
| Paintings and Books, Ericson Gallery, Philadelphia, PA                             | 2000 |
| Tompkins Gallery, Cedar Crest College <i>Pat Badt: Made in Japan</i>               | 1995 |
| Allentown Art Museum, Payne Hurd Gallery, PA                                       | 1993 |
| M-13 Gallery, Project Room, New York, NY   | 1993 |
| Mamaziam Gallery, Framingham State College, MA                                     | 1991 |
| R.C. Erpf Gallery, New York, NY  | 1988 |

### Installation Exhibitions

|  |      |
|--|------|
| Lafayette College, <i>On Ice</i> , Williams Center, Easton, PA                     | 2007 |
| Faculty Exhibition, <i>Aspen with Scott Sherk sound</i> , Cedar Crest College, PA  | 2006 |
| Kim Foster Gallery, <i>Terrain</i> , New York, NY                                  | 2006 |
| Lafayette College, <i>Point, Line, Plane, collaboration with Scott Sherk</i>       | 2003 |
| Cedar Crest College, <i>Lines, paintings and poetry, Pat Badt -Carolyn Segal</i> , | 2002 |
| Marshall Arts, Memphis, TN <i>Range; a sited environment</i>                       | 2000 |
| Marshall University, <i>Clouded Drawings</i>                                       | 1999 |
| Katonah Museum of Art, Katonah, NY <i>Hut View</i>                                 | 1997 |
| Kim Foster Gallery, New York City <i>HorizonLines</i>                              | 1997 |

### Selected Group Exhibitions

|  |      |
|--|------|
| Center for Icelandic Art, Reykjavik, Iceland               | 2008 |
| Rock, Paper, Scissors, Free Library, Philadelphia, PA      | 2008 |
| Masters at Work, Banana Factory, Bethlehem, PA             | 2007 |
| Some Serious Business, Southside NCCGallery, Bethlehem, PA | 2006 |
| Grossman Gallery, Lafayette College, PA                    | 2002 |
| Kim Foster Gallery, NY, NY                                 | 2001 |
| Ericson Gallery, Philadelphia, PA                          | 2000 |
| MCS Gallery, PA  | 2000 |
| Hunterdon Art Museum, Clinton, N.J.                        | 1998 |

|  |      |
|--|------|
| Gleason Gallery, Boothbay Harbor, Maine              | 1996 |
| New Arts Program, Kutztown, PA                       | 1995 |
| Tezukayama College, Nara, Japan, <i>Two Artists</i>  | 1994 |
| Freedman Gallery, Albright College, PA               | 1993 |
| Girdler Gallery, Lehigh University, PA               | 1991 |
| M-13 Gallery   | 1991 |
| M-13 Gallery, NY, NY, <i>Two Painters</i>            | 1990 |
| M-13 Gallery, NY, NY                                 | 1989 |
| Muse Gallery, Philadelphia, PA                       | 1988 |
| Martin Gallery, Muhlenberg College, PA               | 1988 |
| M-13 Gallery, NY, NY                                 | 1987 |
| White Columns, NY, NY                                | 1987 |
| Maryanne McCarthy Gallery, NY, <i>Works on Paper</i> | 1986 |
| M-13 Gallery, NY, NY                                 | 1986 |

### **Awards and Residencies**

SIM; The Association of Icelandic Visual Artists, month long residency in Iceland, 2008  
 Cedar Crest College, Research Grant, 2008, 2007, 2003, 2002, 2000, 1998, 1995, 1993  
 Year living in Japan, international teacher's exchange, Tezukayama College, Nara, Japan  
 1994-1995  
 National Endowment for the Arts, Artist Fellowship 1989-90  
 One month artist residency exchange Paris, France, 1990  
 First Prize, Mayfair Art Exhibition, 1989, curated by Lisa Dennison  
 Rome Prize Finalist, American Academy in Rome, 1985

### **Public Collections**

Allentown Art Museum, Allentown, PA  
 Bryn Mawr College, Bryn Mawr, PA  
 Cedar Crest College, Allentown, PA  
 Lebanon Family Health, Lebanon, PA





