

Oehme Graphics

Exhibiting in the Inaugural

Brooklyn Fine Art Print Fair

March 27-30, 2025



Elisabeth Condon, *Intersections 12*, 2024. Watercolor from vellum.
23 3/4 x 35 1/4 inches (image), 28 1/2 x 39 1/2 inches (sheet). \$3880, framed.

BOOTH D 03

Brooklyn Fine Art Print Fair at Powerhouse Arts

March 27 -30, 2025

Hours: Friday, 11 AM-8 PM

Saturday, 11 AM-6 PM

Sunday, 11 AM-5 PM

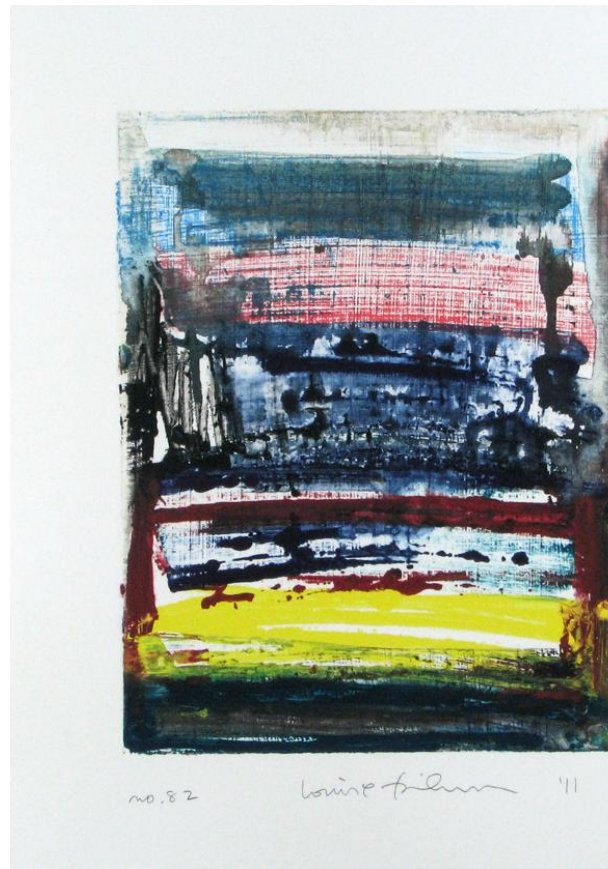
Powerhouse Arts

322 Third Avenue

Brooklyn, New York 11215

VIP Opening Night Preview Reception: Thursday, March 27th,
6-9 PM

Please call or [email](#) us for a ticket link.



Left: Louise Fishman, *Homage To The Mountains NO. 83*, 2011. Watercolor monotype from mat board. 13 1/8 x 8 1/2 inches (image), 17 3/8 x 12 1/4 inches (sheet). \$2300, framed.

Right: Louise Fishman, *Homage To The Mountains NO. 82*, 2011. Watercolor monotype from mat board. 12 1/2 x 9 3/4 inches (image), 17 1/4 x 14 1/4 inches (sheet). \$2300, framed.

Join us to view a large spectrum of works, in many styles, from emerging to blue-chip artists. We are delighted to feature works by:

[Katherine Bowling](#)

[Ken Buhler](#)

[Taiko Chandler](#)

[Elisabeth Condon](#)

[Sari Davidson](#)

[Louise Fishman](#)

[Maggie Fleming](#)

[Deborah Freedman](#)

[Nancy Friese](#)

[Claire Lieberman](#)

[Melissa Meyer](#)

[Jill Moser](#)

[Sue Oehme](#)

[David Row](#)

[Connie Saddlemire](#)

[Jeanne Schneider](#)

[Catherine Shuman Miller](#)

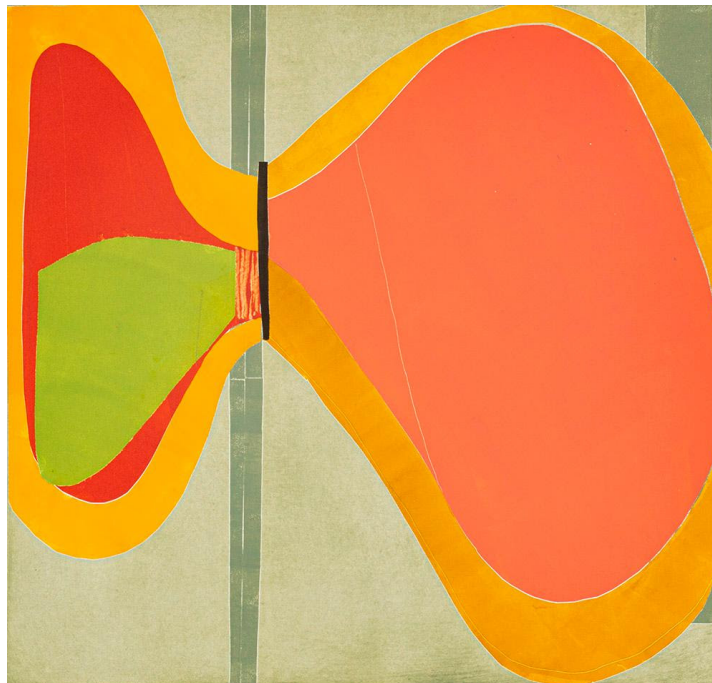
[Dorothea Van Camp](#)

[Joanna Webster](#)

[Janine Wong](#)

[Paula Zinsmeister](#)

[Deborah Zlotsky](#)



Jill Moser, *Chroma High 17*, 2022. Oil monoprint. 20 x 21 inches (image), 28 x 28 inches (sheet). \$3400, framed.

Please contact us if you have any questions or would like to see a specific artist's works.



O G

Sue Direct: 970-846-6609
970.870.6609

sueoehme@gmail.com
www.oehmegraphics.com